

MONTHLY MEMBERSHIP PROGRESS REPORT

LOCATION AUSTRALIA

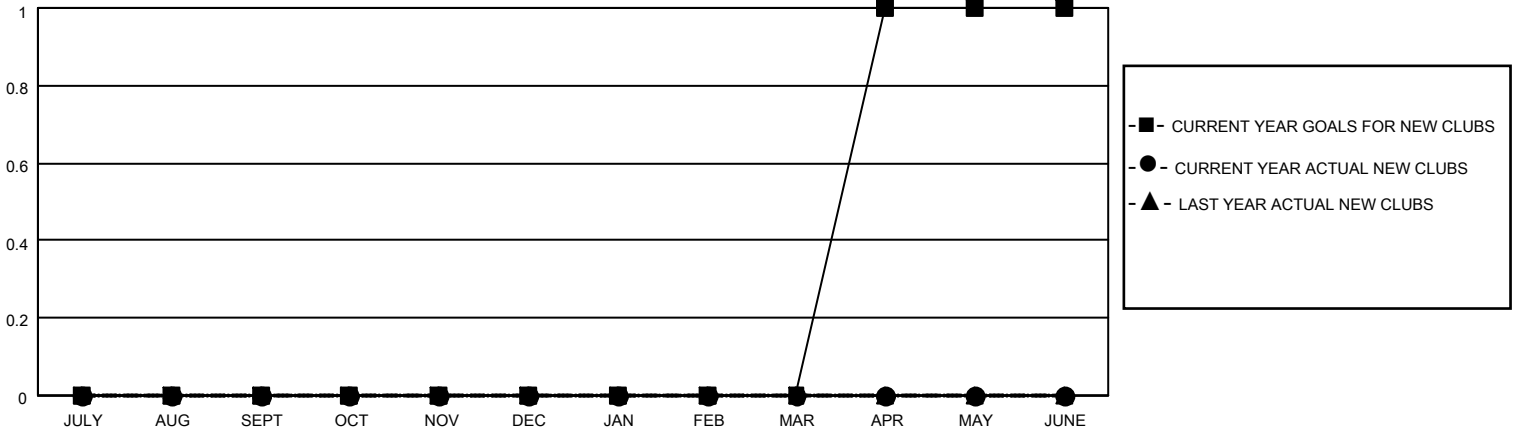
District 201Q3

Results as of: 5/31/2023

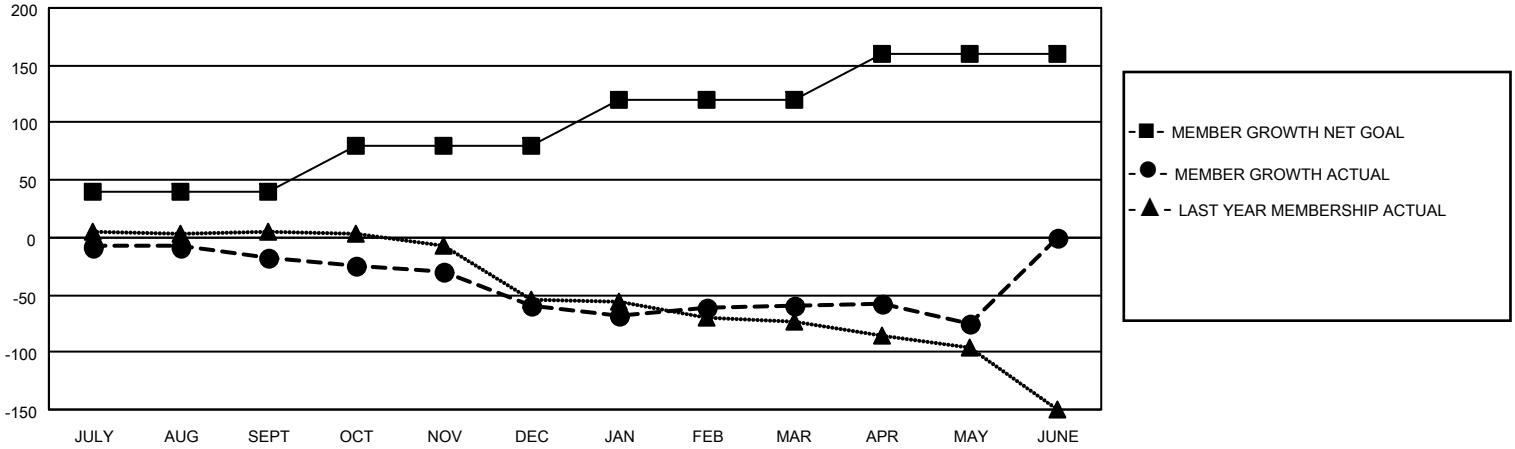
Clubs			
RESULTS FOR 2022-2023			
QUARTER	NEW CLUB GOAL	NEW CLUBS	DROPPED CLUBS
JULY/AUG/SEPT	0	0	1
OCT/NOV/DEC	0	0	0
JAN/FEB/MAR	0	0	0
APR/MAY/JUNE	1	0	0

Members			
RESULTS FOR 2022-2023			
QUARTER	MEMBER GROWTH NET GOAL	MEMBER GROWTH ACTUAL	DROPPED MEMBERS ACTUAL (including transfers)
JULY/AUG/SEPT	40	28	34
OCT/NOV/DEC	40	43	72
JAN/FEB/MAR	40	54	44
APR/MAY/JUNE	40	41	48

GOALS AND ACTUAL NEW CLUBS CUMULATIVE



GOALS AND ACTUAL MEMBERS CUMULATIVE



DROPPED CLUBS: 1

44 CLUBS OF 69 ADDED 1 OR MORE NEW MEMBERS

GENDER DISTRIBUTION

MALE	793 (56.85%)
FEMALE	602 (43.15%)
NON BINARY	0 (0.00%)
PREFER NOT TO ANSWER	0 (0.00%)

DROPPED MEMBERS

[CLICK HERE FOR CUMULATIVE MEMBERSHIP DATA](#)

DECEASED	10
CLUB CANCELLED	0
OTHER	188
TOTAL	198

TOTAL FAMILY UNIT MEMBERS	299
FAMILY MEMBERS PAYING HALF DUES	150